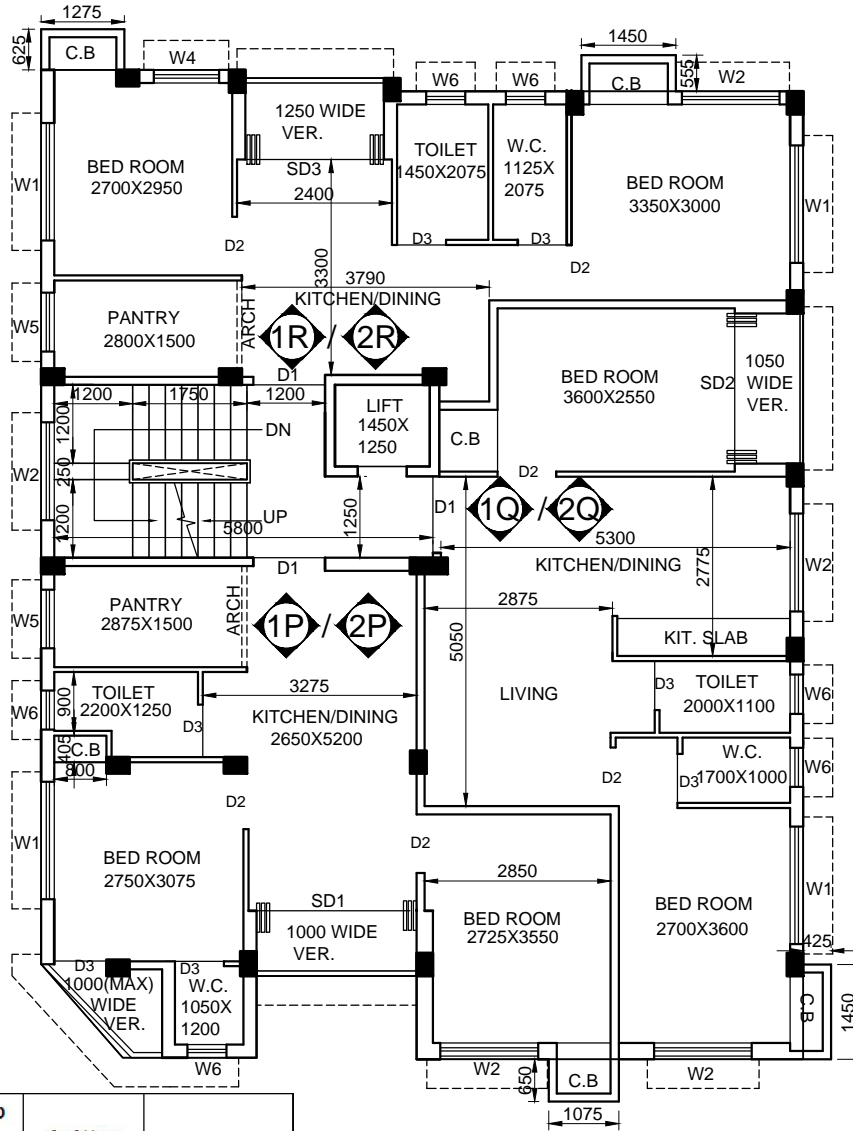


G+III STORIED RESIDENTIAL BUILDING AT HOLDING NO - 1646,
 DHALUA MADHYA, AT MOUZA - DHALUA, R.S.
 DAG NO.-107(P), R.S.KHATI ANNO.-188, J.LNO.-43,
 WARD NO.-02, P.S.-SONARPUR, DIST.-SOUTH 24 PARGANAS,
 UNDER- RAJPUR SONARPUR MUNICIPALITY.



FIRST & SECOND FLOOR PLAN

GROUND FLOOR STAIR, LIFT & LIFT LOBBY AREA (SQM.)	GROUND FLOOR SERVICE AREA (SQM.)	TOTAL (SQM.)
16.656	6.908	23.564

FLAT NAME	RERA CARPET AREA (SQM.)	NET FLAT AREA (EXCLUDING PROPORTIONATE COMMON AREA) (SQM.)	PROPORTIONATE COMMON AREA (TYP. FL.) EXCLUDING LIFT & STAIR WELL (SQM.)	PROPORTIONATE GROUND FLOOR COMMON AREA (SQM.)	BUILT-UP AREA (SQM.)	SUPER BUILTUP AREA (ADD 25%) (SQM.)	SUPER BUILT-UP AREA (SQFT.)
FLAT 1P/2P	42.585 SQM./ 458 SQFT.	52.580	4.831	2.794	60.205	75.256	810
FLAT 1Q/2Q	47.743 SQM./ 514 SQFT.	54.921	5.046	2.919	62.886	78.608	846
FLAT 1R/2R	40.582 SQM./ 437 SQFT.	50.078	4.601	2.661	57.34	71.675	772